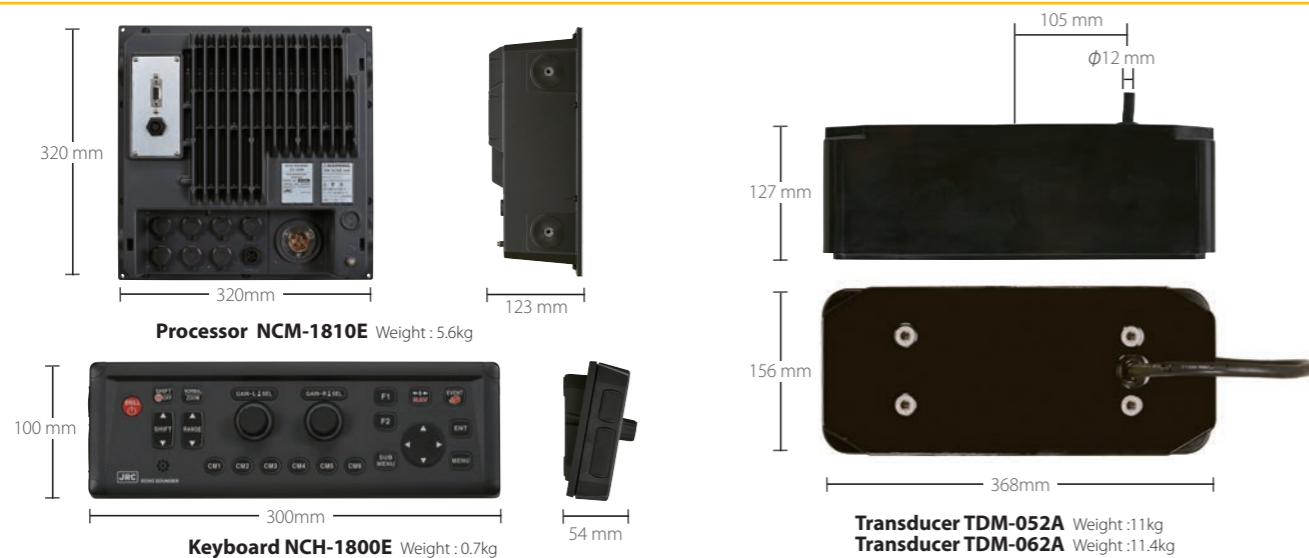


## Specifications

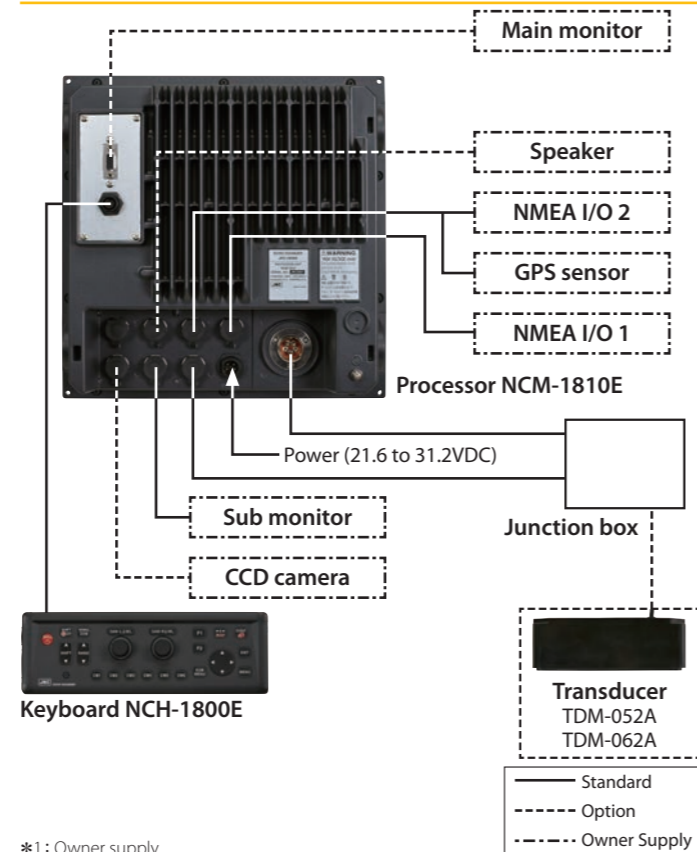
Model	JFC-180BB
Processor unit	NCM-1810E
Operation unit	NCH-1800E
transducer (Output frequency)	TDM-052A (38 to 75kHz and 130 to 210kHz) TDM-062A (38 to 75kHz and 85 to 135kHz)
Selectable frequency range	24 to 240kHz 0.1kHz step
Output method	Simultaneous/Alternate
Display type	Owner supply (XGA compatible output through RGB connector)
Display ranges	1 to 3000m, 1 to 2000l.fm (8 ranges can be set to users choice)
Zoom ranges	1 to 260m, 1 to 180l.fm
Range units	m, ft, fm, l.fm
Presentation modes	High frequency, Low frequency, 1 to 4 frequency, Zoom image (Bottom lock, Bottom discrimination, Bottom zoom, Zoom, Bottom follow zoom), Nav mode, Vertical split, Horizontal split, Mix A-scope can be displayed at all above modes
Presentation colors	64 colors, 16 colors, 8 colors, Monochrome
Back ground colors	Marine blue, Blue, Dark blue, Black, White, Nighttime color, Other 4 colors
Alarms	Bottom, Fish, Temperature*2, Speed*3, Arrival*4, XTE*4
Image speed	9 steps & stop
Functions	Interference rejection, Color rejection, VRM, Noise reduction, White line, Water temperature correct, Boat speed correct, Store image (500 images), Sona-Tone, Fishing Hot Spot, Event memory, Simple plotter, Panel illumination, Power reduction, External trigger, Detection area display, CM key, Water Temp. graph, Individual range operation, External memory storage (SD card, USB memory), Heaving compensation
Auto functions	Range, Shift, TVG, TX Power, White line
Languages	Japanese, Chinese, English, French, Greek, Italian, Korean, Spanish, Thai
Input data formats and sentences	NMEA0183 Ver.1.5/2.0/3.0 GGA, GLL, HDT, MTW, MWV, RMC, VHW, VTG, ZDA
Output data formats and sentences	NMEA 0183 Ver.2.0 (DBT: Ver.1.5) DBT, DPT, GGA, GLL, HDT, MTW, MWV, RMC, TLL, VHW, VTG, ZDA
NMEA ports	2
Power supply	21.6 to 31.2VDC
Power consumption	50W or less (24VDC)
Environmental	Operating temperature : -15 to +55°C Water protection : IPX5 (Operation unit)

## Dimensions



• Specifications may be subject to change without notice.

## Configuration



- \*1 : Owner supply
- \*2 : Requires data from water temperature sensor
- \*3 : Requires data from external speed sensor or GPS sensor
- \*4 : Requires data from GPS sensor

For further information, contact:

**JRC** Japan Radio Co., Ltd.  
Since 1915 URL <http://www.jrc.co.jp/eng/>

**Main Office:** NAKANO CENTRAL PARK EAST  
10-1, Nakano 4-chome, Nakano-ku, Tokyo  
164-8570, Japan  
Telephone: +81-3-6832-1816  
Facsimile: +81-3-6832-1845

**Overseas Branches :** Seattle, Amsterdam, Athens, Manila  
**Liaison Offices :** Taipei, Jakarta, Hanoi, New York  
**Overseas Subsidiaries :** Shanghai, Rio de Janeiro

32EM ISO9001, ISO14001 Certified  
© 2016.5 2016.11 CAT.No.Y10-147 (No.493-1-0) D

# Echo sounder JFC-180BB

**JRC**



Variable quad frequencies in blackbox design will powerfully support your fishing

- 2-type selectable transducers with different frequency range
- Variable frequency function enables quick escape from surrounding ships interference
- Digital processing technology presents clear fish echo in all detection range
- Six Conditional Memory keys will totally recall pre-set parameters instantly with your finger tip
- Simple keys and dials with colored back light keyboard will support intuitive operation
- Your own display (supports XGA resolution) can be connected by RGB

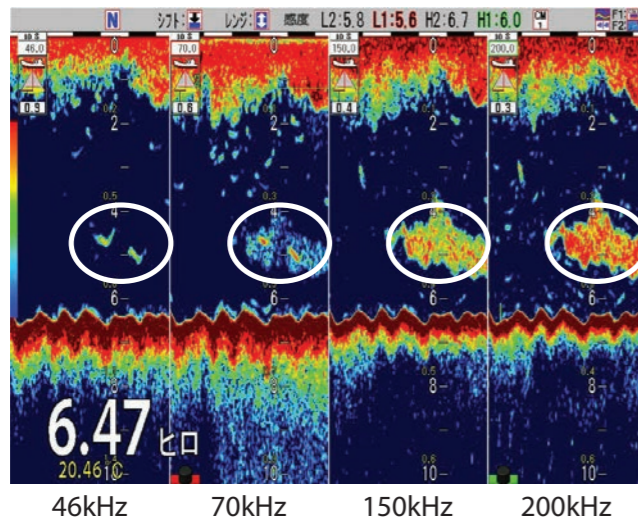
**JRC** Japan Radio Co., Ltd.

## Advanced sounding

The JFC-180 is an innovative, blackbox echo sounder which is capable of displaying 4 different frequencies at the same time, providing the operator greatly enhanced fish detection. It is easier to differentiate between the various fish species, large shoals of fish and the seabed, resulting in better targeted catches and contributing to conservation of fish stocks.



- Advanced 3 kW transducer
- Black box design
- Dedicated keyboard
- XGA display resolution output
- Flexible interfacing
- Digital signal processing technology
- Simultaneous display of four frequencies
- One touch memory buttons
- Long range detection
- Energy saving mode



## Quad frequency

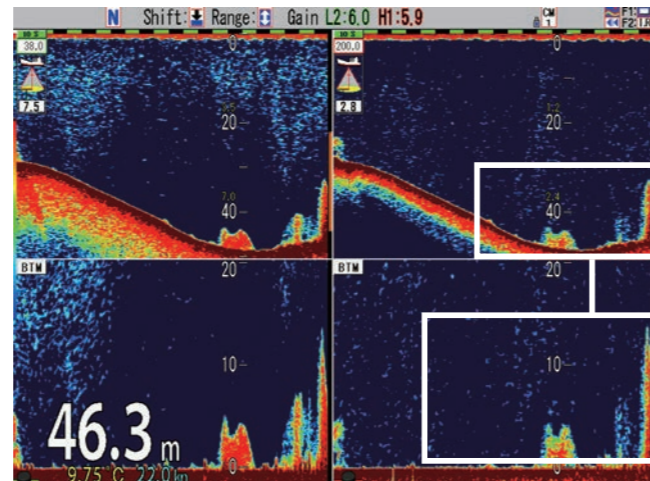
You can select four frequencies within the range of broadband transducer. Flexible selection of frequencies by 0.1 kHz step enables the user to stay away from interference with the sounders on other vessels.

**Low frequency**  
38 to 75 kHz

**High frequency**  
130 to 210 kHz

## Zooming

Users can zoom by any range. After setting the zoom image, the normal image is indicated above and the zoomed image is displayed at the bottom part of the screen. The example on the right is focussed from the sea bottom, showing the depth upwards, which is especially useful for trawler vessels.



## Languages

The JFC-180 allows the operator to switch between English, Japanese, Chinese, French, Greek, Italian, Korean, Spanish and Thai.

CM1	Low Frequency2	Low Frequency1	High Frequency2	High Frequency1
Standard Echo Display	Normal	Normal	Normal	Normal
Mix	OFF	OFF	OFF	OFF
Frequency	38.0kHz	75.0kHz	130.0kHz	200.0kHz
Pulse Length	Short	Short	Short	Short
Band Width	Medium	Medium	Medium	Medium
Zoom Display	OFF	OFF	OFF	OFF
Gain	Individual	Synchronized		

## Settings

With the Conditional Memory (CM) keys you can personalize and set your preferred display mode. A professional user can set up to 4 different frequencies at the same time, type of echo display, pulse length, band width, zoom display and gain. Novice operators can select from many auto functions such as range, shift, gain, transmit power and white line.

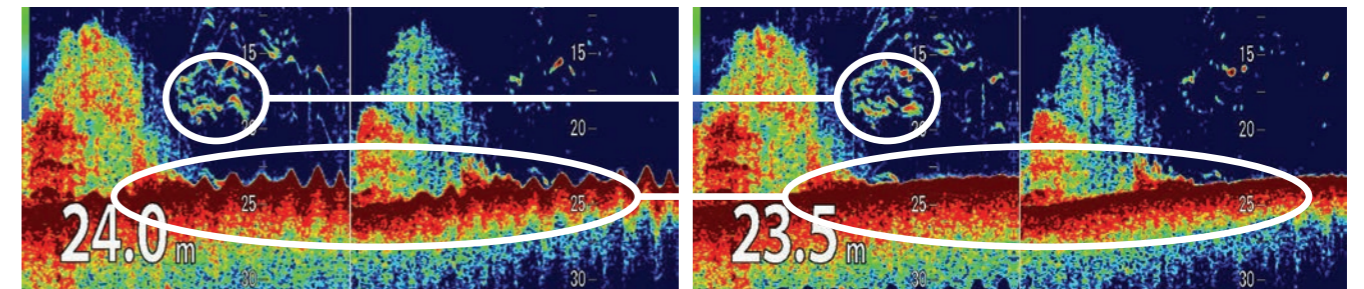
## Keyboard

The color backlit keyboard makes operating the echo sounder easy and straightforward. A USB and SD card slot at the side of the keyboard allows saving images (screenshots), waypoints and backing up your settings.



## Heave compensation

In rough ocean conditions with high waves, the JFC-180BB can correct the up and down (attitude) movement. This function is standard available but requires an external connection to for example the JRC GPS compass (JLR-21). This is especially useful for fishing vessels where high waves can be compensated to accurately display the depth of the fish echo or to even the sea bottom.



## In the box

- Processor unit
- Keyboard
- Junction box
- Power cable
- Spare parts
- Manual (English)

## Accessories

- Power supply
- Transducer
- Transducer extension
- Transmission filter
- Various cables/connectors

## Tech Specs

Output power	3 kW
Output frequency	38 to 75 kHz and 130 to 210 kHz
Output method	Single or alternating
Transmit rate	Up to 3000/min
Display output	XGA (1024 by 768 pixels)
NMEA ports	1 input and 1 output
Power supply	21.6 to 31.2V DC
Power consumption	50W or less